

Fort Wayne-Allen County Airport Authority
Monthly Activity Report
JULY 2010

Category	2010	Month 2009	2008	Change vs 2009	Change vs 2008	2010	Year-To-Date 2009	2008	Change vs 2009	Change vs 2008
Fort Wayne International (FWA):										
Airline Passengers:										
Enplaned:	25,098	25,114	24,357	-0.06%	3.04%	162,737	160,015	181,230	1.70%	-10.20%
Deplaned:	25,357	25,304	25,484	0.21%	-0.50%	160,946	160,043	180,746	0.56%	-10.95%
Total Enplaned & Deplaned:	50,455	50,418	49,841	0.07%	1.23%	323,683	320,058	361,976	1.13%	-10.58%
Mail (lbs):										
On:	0	0	0	0.00%	0.00%	0	5	0	-100.00%	0.00%
Off:	0	0	0	0.00%	0.00%	8	0	0	100.00%	100.00%
Total Mail On & Off:	0	0	0	0.00%	0.00%	8	5	0	60.00%	100.00%
Total in U.S. Tons:	0	0	0	0.00%	0.00%	0	0	0	60.00%	100.00%
Freight/Express (lbs):										
On:	1,331,505	1,263,856	1,297,117	5.35%	2.65%	8,933,793	7,867,082	9,081,874	13.56%	-1.63%
Off:	833,863	666,848	699,428	25.05%	19.22%	5,138,909	4,052,172	5,134,867	26.82%	0.08%
Total Cargo On & Off:	2,165,368	1,930,704	1,996,545	12.15%	8.46%	14,072,702	11,919,254	14,216,741	18.07%	-1.01%
Total in U.S. Tons:	1,083	965	998	12.15%	8.46%	7,036	5,960	7,108	18.07%	-1.01%
Aircraft Operations:										
Air Carrier:	166	174	174	100.00%	-4.60%	1,223	1,208	1,176	1.24%	4.00%
Air Taxi:	1,172	1,748	1,580	100.00%	-25.82%	9,941	13,208	13,271	-24.74%	-25.09%
Military:	0	479	804	-100.00%	-100.00%	1,246	2,832	2,445	-56.00%	-49.04%
General Aviation:	0	2,660	4,734	-100.00%	-100.00%	10,602	17,234	21,908	-38.48%	-51.61%
Total Operations:	1,338	5,061	7,292	-73.56%	-81.65%	23,012	34,482	38,800	-33.26%	-40.69%
Total Authority Operations:	1,338	5,061	7,292	-73.56%	-81.65%	23,012	34,482	38,800	-33.26%	-40.69%

***NOTE: Aircraft Operations are not accurate until the FAA provides the final data 30-45 days after the month of activity.**

Fort Wayne-Allen County Airport Authority
2010 Activity Report
18-Aug-10

Activity Item	2010												Total Year	Change Vs 2009	
	Jan	Feb	Mar	Apr	May	Jun	Jul	Aug	Sep	Oct	Nov	Dec			
Airline Passengers:															
Enplaned:															
Allegiant Air-Air Taxi	2,815	3,304	5,528	3,942	3,590	4,410	4,261							27,850	7.48%
American Eagle/Connections-Chicago-Air Taxi	2,885	2,884	3,355	2,443	3,153	2,904	2,607							20,231	-1.98%
American Eagle-Dallas-Air Taxi	2,300	2,130	2,621	3,158	2,463	2,756	2,716							18,144	10.42%
ASA-Air Taxi	2,228	1,670	1,361	216	-	1,877	2,658							10,010	-41.28%
Comair-Air Taxi	357	671	1,408	1,351	1,205	518	330							5,840	209.49%
Chautauqua-Delta Express-Air Taxi	234	622	1,210	182	808	635	78							3,769	-79.88%
Continental Express-Commutair-Air Taxi	-	-	-	-	-	-	-							-	-100.00%
Mesa Airlines-United Express-Air Taxi	-	-	-	-	-	-	-							-	-100.00%
Mesaba/Northwest Airlin-Air Taxi	752	574	704	93	-	1,153	1,643							4,919	-13.14%
Pinnacle-Delta-Air Taxi	3,707	4,325	5,946	8,541	8,459	8,080	7,211							46,269	59.89%
Skywest-Air Taxi	2,453	2,470	3,211	3,112	3,102	3,316	3,478							21,142	102.49%
Skywest-Delta-Air Taxi	2,557	910	-	-	-	-	18							3,485	100.00%
Charters-Air Carrier	185	52	206	190	164	183	98							1,078	-5.36%
Sub-Total: Enplaned Air Carrier	185	52	206	190	164	183	98	-	-	-	-	-	-	1,078	-5.36%
Sub-Total: Enplaned Air Taxi	20,288	19,560	25,344	23,038	22,780	25,649	25,000	-	-	-	-	-	-	161,659	1.75%
Total Enplaned:	20,473	19,612	25,550	23,228	22,944	25,832	25,098	-	-	-	-	-	-	162,737	1.70%
Deplaned:															
Allegiant Air-Air Taxi	2,852	3,136	5,042	4,828	3,708	4,350	4,346							28,262	6.21%
American Eagle/Connections-Chicago-Air Taxi	2,513	2,509	3,122	2,624	2,895	2,742	2,818							19,223	-0.71%
American Eagle-Dallas-Air Taxi	2,186	2,176	2,685	2,946	2,456	2,636	2,628							17,713	7.89%
ASA-Air Taxi	2,371	1,531	1,316	210	-	1,668	2,289							9,385	-44.85%
Comair-Air Taxi	335	684	1,390	1,316	1,233	367	218							5,543	199.78%
Chautauqua-Delta Express-Air Taxi	187	590	1,073	143	938	558	111							3,600	-79.62%
Continental Express-Commutair-Air Taxi	-	-	-	-	-	-	-							-	-100.00%
Mesa Airlines-United Express-Air Taxi	-	-	-	-	-	64	-							64	-98.93%
Mesaba/Northwest Airlin-Air Taxi	435	448	582	81	-	970	1,376							3,892	-2.99%
Pinnacle-Delta-Air Taxi	4,215	4,725	6,429	9,138	8,400	8,229	8,102							49,238	50.30%
Skywest-Air Taxi	2,310	2,251	3,155	2,871	2,883	3,289	3,295							20,054	85.27%
Skywest-Delta-Air Taxi	2,023	748	-	-	47	-	76							2,894	100.00%
Charters-Air Carrier	185	52	206	190	164	183	98							1,078	-5.36%
Sub-Total: Deplaned Air Carrier	185	52	206	190	164	183	98	-	-	-	-	-	-	1,078	-5.36%
Sub-Total: Deplaned Commuter	19,427	18,798	24,794	24,157	22,560	24,873	25,259	-	-	-	-	-	-	159,868	0.61%
Total Deplaned:	19,612	18,850	25,000	24,347	22,724	25,056	25,357	-	-	-	-	-	-	160,946	0.56%
Total Enplaned & Deplaned:	40,085	38,462	50,550	47,575	45,668	50,888	50,455	-	-	-	-	-	-	323,683	1.13%

Fort Wayne-Allen County Airport Authority
 2010 Activity Report
 18-Aug-10

Activity Item	2010												Total Year	Change Vs 2009		
	Jan	Feb	Mar	Apr	May	Jun	Jul	Aug	Sep	Oct	Nov	Dec				
Mail (lbs):																
On:																
ASA-Air Taxi	-	-	-	-	-	-	-	-	-	-	-	-	-	-	-	-100.00%
Comair-Air Taxi	-	-	-	-	-	-	-	-	-	-	-	-	-	-	-	0.00%
Chautauqua-Delta Express-Air Taxi	-	-	-	-	-	-	-	-	-	-	-	-	-	-	-	0.00%
Pinnacle-Delta-Air Taxi	-	-	-	-	-	-	-	-	-	-	-	-	-	-	-	-100.00%
Total Mail On:	-	-	-	-	-	-	-	-	-	-	-	-	-	-	-	-100.00%
Off:																
ASA-Air Taxi	6	2	-	-	-	-	-	-	-	-	-	-	-	-	8	100.00%
Comair-Air Taxi	-	-	-	-	-	-	-	-	-	-	-	-	-	-	-	0.00%
Chautauqua-Delta Express-Air Taxi	-	-	-	-	-	-	-	-	-	-	-	-	-	-	-	0.00%
Pinnacle-Delta-Air Taxi	-	-	-	-	-	-	-	-	-	-	-	-	-	-	-	0.00%
Total Mail Off:	6	2	-	-	-	-	-	-	-	-	-	-	-	-	8	100.00%
Total Mail On & Off:	6	2	-	-	-	-	-	-	-	-	-	-	-	-	8	60.00%

Fort Wayne-Allen County Airport Authority
2010 Activity Report
18-Aug-10

Activity Item	2010												Total Year	Change Vs 2009	
	Jan	Feb	Mar	Apr	May	Jun	Jul	Aug	Sep	Oct	Nov	Dec			
Freight/Cargo (lbs):															
On:															
ASA-Air Taxi	419	113	1	-	-	-	-	-	-	-	-	-	-	533	-75.77%
Chautauqua-Delta Express-Air Taxi	-	-	-	-	-	-	-	-	-	-	-	-	-	-	-100.00%
Comair-Air Taxi	-	-	-	-	-	-	-	-	-	-	-	-	-	-	0.00%
Pinnacle-Delta-Air Taxi	-	-	-	-	-	-	-	-	-	-	-	-	-	-	-100.00%
Sub-Total Airlines	419	113	1	-	-	-	-	-	-	-	-	-	-	533	-92.69%
Federal Express-Air Carrier	1,005,258	1,002,149	1,086,429	1,045,072	1,043,723	1,112,072	1,131,684	-	-	-	-	-	-	7,426,387	19.99%
United Parcel Service-Air Carrier	215,191	188,188	228,307	199,322	211,624	261,296	199,821	-	-	-	-	-	-	1,503,749	-9.99%
Transient Air Cargo-Air Carrier	-	-	-	3,124	-	-	-	-	-	-	-	-	-	3,124	100.00%
Sub-Total Air Cargo	1,220,449	1,190,337	1,314,736	1,247,518	1,255,347	1,373,368	1,331,505	-	-	-	-	-	-	8,933,260	13.66%
Total Freight/Cargo On:	1,220,868	1,190,450	1,314,737	1,247,518	1,255,347	1,373,368	1,331,505	-	-	-	-	-	-	8,933,793	13.56%
Off:															
Allegiant Air-Air Taxi	-	-	-	-	-	-	-	-	-	-	-	-	-	-	-100.00%
Chautauqua-Delta Express-Air Taxi	-	-	-	-	-	-	-	-	-	-	-	-	-	-	-100.00%
Comair-Air Taxi	-	-	-	-	-	-	-	-	-	-	-	-	-	-	0.00%
Pinnacle-Delta-Air Taxi	-	-	-	-	-	-	-	-	-	-	-	-	-	-	-100.00%
Sub-Total Airlines	-	-	-	-	-	-	-	-	-	-	-	-	-	-	-100.00%
Federal Express-Air Carrier	426,621	360,801	428,645	407,440	427,723	450,291	478,563	-	-	-	-	-	-	2,980,084	21.02%
United Parcel Service-Air Carrier	256,134	261,949	292,341	308,588	288,368	362,385	355,300	-	-	-	-	-	-	2,125,065	34.28%
Transient Air Cargo-Air Carrier	-	-	7,796	20,820	4,242	902	-	-	-	-	-	-	-	33,760	2328.78%
Sub-Total Air Cargo	682,755	622,750	728,782	736,848	720,333	813,578	833,863	-	-	-	-	-	-	5,138,909	27.00%
Total Freight/Cargo Off:	682,755	622,750	728,782	736,848	720,333	813,578	833,863	-	-	-	-	-	-	5,138,909	26.82%
Total Freight/Cargo On & Off:	1,903,623	1,813,200	2,043,519	1,984,366	1,975,680	2,186,946	2,165,368	-	-	-	-	-	-	14,072,702	18.07%

Fort Wayne-Allen County Airport Authority
 2010 Activity Report
 18-Aug-10

Activity Item	2010												Total Year	Change Vs 2009		
	Jan	Feb	Mar	Apr	May	Jun	Jul	Aug	Sep	Oct	Nov	Dec				
Aircraft Operations-																
FWA Operations																
Allegiant Air-Air Taxi	44	46	78	68	54	64	66								420	9.38%
American Eagle-Air Taxi	298	258	304	290	292	296	304								2,042	-8.68%
ASA-Air Taxi	114	72	60	10	-	80	112								448	-47.29%
Chautauqua-Delta Express-Air Taxi	12	28	54	8	50	32	6								190	-80.53%
Continental Express-Commutair-Air Taxi	-	-	-	-	-	-	-								-	-100.00%
Mesa Airlines-United Express-Air Taxi	-	-	-	-	-	2	-								2	-99.57%
Mesaba/Northwest Airlin-Air Taxi	52	40	46	6	-	64	96								304	-27.27%
Comair-Air Taxi	16	30	60	62	56	24	14								262	3175.00%
Pinnacle-Delta-Air Taxi	222	240	294	464	422	396	396								2,434	18.96%
Skywest-Air Taxi	294	200	188	172	172	170	178								1,374	97.41%
Charters-Air Carrier	4	4	4	4	4	4	2								26	8.33%
Air Carrier-Itinerant	46	45	-	-	-	-									91	-5.21%
Air Taxi-Itinerant	284	275	637	476	403	390									2,465	-40.55%
Federal Express-Air Carrier	84	82	88	88	84	86	90								602	2.38%
United Parcel Service-Air Carrier	68	64	72	72	64	70	70								480	-2.04%
Transient Air Cargo-Air Carrier	2	-	6	4	6	2	4								24	140.00%
Military-Local	121	85	129	110	160	58									663	-47.67%
Military-Itinerant	106	109	112	101	100	55									583	-62.75%
General Aviation-Local	203	316	1,096	534	395	317									2,861	-48.87%
General Aviation-Itinerant	1,030	1,018	1,319	1,845	1,231	1,298									7,741	-33.49%
Sub-Total Airline-Air Carrier	4	4	4	4	4	4	2	-	-	-	-	-	-	-	26	8.33%
Sub-Total Airline-Air Taxi	1,052	914	1,084	1,080	1,046	1,128	1,172	-	-	-	-	-	-	-	7,476	-17.50%
Sub-Total Airline	1,056	918	1,088	1,084	1,050	1,132	1,174	-	-	-	-	-	-	-	7,502	-17.43%
Sub-Total Cargo	154	146	166	164	154	158	164	-	-	-	-	-	-	-	1,106	1.65%
Sub-Total Air Carrier	204	195	170	168	158	162	166	-	-	-	-	-	-	-	1,223	1.24%
Sub-Total Air Taxi	1,336	1,189	1,721	1,556	1,449	1,518	1,172	-	-	-	-	-	-	-	9,941	-24.74%
Sub-Total Military	227	194	241	211	260	113	-	-	-	-	-	-	-	-	1,246	-56.00%
Sub-Total General Aviation	1,233	1,334	2,415	2,379	1,626	1,615	-	-	-	-	-	-	-	-	10,602	-38.48%
Fort Wayne Int. Aircraft Operations	3,000	2,912	4,547	4,314	3,493	3,408	1,338	-	-	-	-	-	-	-	23,012	-33.26%
FAA Operations	3,000	2,912	4,547	4,314	3,493	3,408									21,674	-37.14%
Total Authority Operations	3,000	2,912	4,547	4,314	3,493	3,408	-	-	-	-	-	-	-	-	23,012	-33.26%

Data in the shaded area are provided by the FAA and run 30-45 days behind.

Fort Wayne-Alen County Airport Authority
 2010 Activity Report
 18-Aug-10

Activity Item	2010												Total Year	Change Vs 2009	
	Jan	Feb	Mar	Apr	May	Jun	Jul	Aug	Sep	Oct	Nov	Dec			
Aircraft Operations-Fort Wayne Int.:															
Air Carrier Operations:															
Air Carrier	204	195	170	168	158	162	166	-	-	-	-	-	-	1,223	1.24%
Air Taxi	1,336	1,189	1,721	1,556	1,449	1,518	1,172	-	-	-	-	-	-	9,941	-24.74%
Total Air Carrier:	1,540	1,384	1,891	1,724	1,607	1,680	1,338	-	-	-	-	-	-	11,164	-22.56%
General Aviation Operations:															
General Aviation-Itinerant	1,030	1,018	1,319	1,845	1,231	1,298	-	-	-	-	-	-	-	7,741	-33.49%
General Aviation-Local	203	316	1,096	534	395	317	-	-	-	-	-	-	-	2,861	-48.87%
Total General Aviation:	1,233	1,334	2,415	2,379	1,626	1,615	-	-	-	-	-	-	-	10,602	-38.48%
Military Operations:															
Military-Itinerant	106	109	112	101	100	55	-	-	-	-	-	-	-	583	-62.75%
Military-Local	121	85	129	110	160	58	-	-	-	-	-	-	-	663	-47.67%
Total Military:	227	194	241	211	260	113	-	-	-	-	-	-	-	1,246	-56.00%
Total Fort Wayne International Operations:	3,000	2,912	4,547	4,314	3,493	3,408	1,338	-	-	-	-	-	-	23,012	-33.26%

NA-DATA HAS NOT BEEN FURNISHED TO THE AIRPORT AUTHORITY AT THIS TIME.

Fort Wayne-Allen County Airport Authority
Monthly Activity Report
JULY 2010

Combined Airline Enplaned Passengers	MONTH			Year-To-Date			Market Share	
	2010	2009	% Change	2010	2009	% Change	2010	2009
Allegiant Air	4,261	3,322	28.27%	27,850	25,912	7.48%	17.11%	16.19%
American Eagle	5,323	5,694	-6.52%	38,375	37,071	3.52%	23.58%	23.17%
Continental	0	1,187	-100.00%	0	6,798	-100.00%	0.00%	4.25%
Delta Connections	3,084	5,885	-47.60%	23,104	37,665	-38.66%	14.20%	23.54%
Delta/Northwest Airlin	8,854	5,864	50.99%	51,188	34,601	47.94%	31.45%	21.62%
United Express	3,478	2,927	18.82%	21,142	16,829	25.63%	12.99%	10.52%
Charters	98	235	-58.30%	1,078	1,139	-5.36%	0.66%	0.71%
Total	25,098	25,114	-0.06%	162,737	160,015	1.70%	100.00%	100.00%

CHARTER ENPLANED PASSENGER INFORMATION							
CHARTER	AIRLINE WORKED	MONTH			Year-To-Date		
		2010	2009	% Change	2010	2009	% Change
Allegiant Air	American Eagle	98	-	100.00%	640	777	-17.63%
Gold Transportation	American Eagle		105	-100.00%	51	232	-78.02%
Vision Air	American Eagle		130	-100.00%	387	130	197.69%
Total Charter:		98	235	-58.30%	1,078	1,139	-5.36%

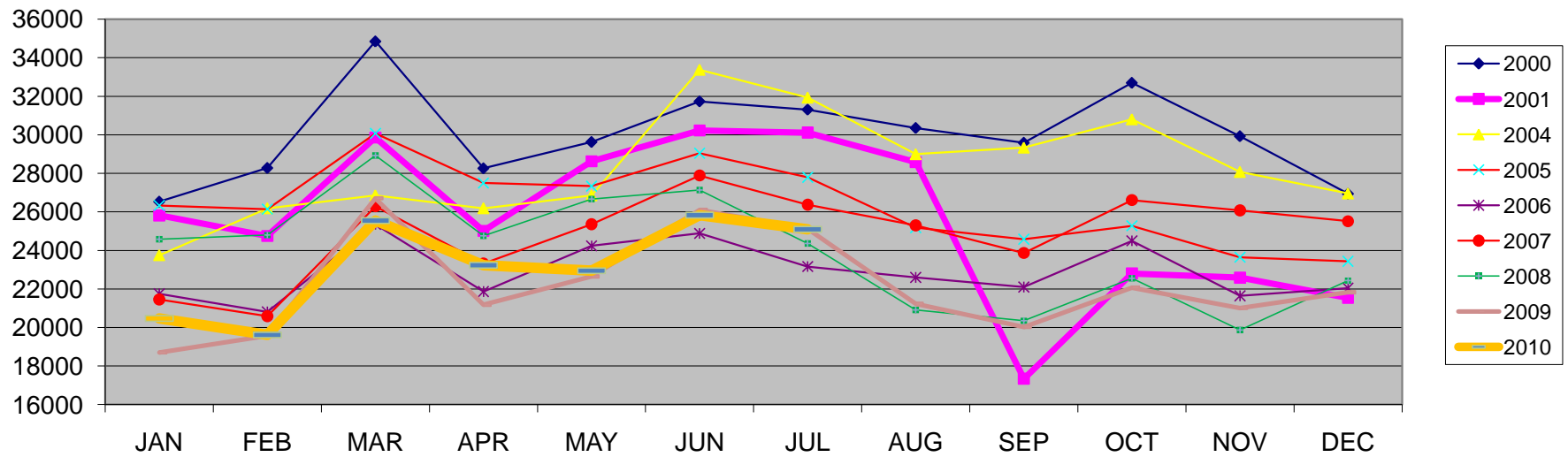
CHARTER OPERATION INFORMATION(1)							
CHARTER	AIRLINE WORKED	MONTH			Year-To-Date		
		2010	2009	% Change	2010	2009	% Change
Allegiant Air	American Eagle	2	-	100.00%	18	14	28.57%
Gold Transportation	American Eagle		2	-100.00%	2	8	-75.00%
Vision Air	American Eagle		2	-100.00%	6	2	200.00%
Total Charter:		2	4	-50.00%	26	24	8.33%

Note (1): An operation = Take off or a Landing

Month: 7

	JAN	FEB	MAR	APR	MAY	JUN	JUL	AUG	SEP	OCT	NOV	DEC	YTD	TOTAL	YTD % Δ
2000	26532	28279	34851	28263	29629	31736	31311	30357	29589	32701	29930	26939	210,601	360,117	
2001	25815	24746	29858	25012	28629	30229	30115	28581	17341	22801	22587	21541	194,404	307,255	-7.69%
2004	23748	26186	26856	26186	26856	33378	31930	28993	29333	30804	28070	26953	195,140	339,293	0.38%
2005	26335	26143	30069	27497	27336	29045	27794	25179	24580	25277	23648	23436	194,219	316,339	-0.47%
2006	21750	20808	25351	21865	24237	24884	23161	22595	22099	24498	21643	22038	162,056	274,929	-16.56%
2007	21454	20588	26291	23319	25358	27888	26373	25300	23866	26612	26076	25514	171,271	298,639	5.69%
2008	24584	24796	28930	24759	26666	27138	24357	20910	20347	22553	19871	22432	181,230	287,343	5.81%
2009	18705	19566	26708	21178	22643	26101	25114	21223	20028	22069	21011	21830	160,015	266,176	-11.71%
2010	20473	19612	25550	23228	22944	25832	25098						162,737	162,737	1.70%

FWA MONTHLY BOARDING TRENDS



YTD Comparison

